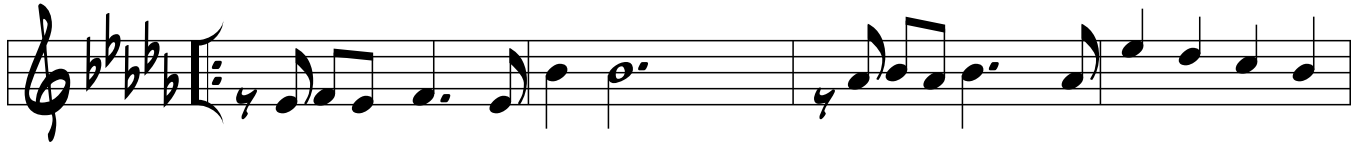


BODY AND SOUL

- JOHN GREEN

E \flat - B \flat 7 E \flat -7 D7 D \flat Δ 7 G \flat 7 F-7 E Δ 7



E \flat -7 C Δ 7 F7 B \flat -7 E \flat 7 E \flat -7 A \flat Δ 7 D \flat 6 F-7



D \flat 6 E-7 A7



D Δ 6 E-7 D/F# G-7 D7 F7 B \flat 7 C#7 F#7 A7 D Δ 7



D-7 G7 C Δ 7 E \flat Δ 7 D-7 G7 C Δ 9 B7 B \flat 9 E7(#11)

