

Swonderful Ab

Bossa

G&I Gershwin

Intro

D^b9^{Sus}4

D^b7#9



A

A^bMaj7

A^o7



S'won - der - ful _____
S'Aw - ful nice _____

S'Mar - vel - ous _____
S'Par - a - dise _____

9 B^b-7

E^b7

A^bMaj7 F7/A B^b-7 E^b7



You should care _____ for me _____
S'what I love _____ to see _____

2.

A^bMaj7 D^o G7



me _____ You've
see _____

B

C^{Maj}7

D-7/C

C^{Maj}7

D-7/C



made my life so glam - or - ous _____

C-9

F7

B^b7

E^b9 E^b7(b9)



You can't blame me for be - ing am - or - ous _____ Oh

A

A^bMaj7

B^o7



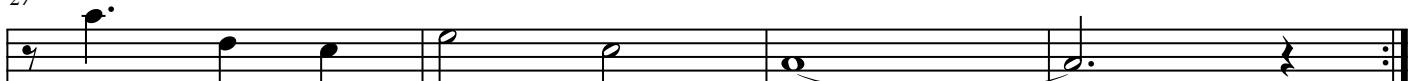
S'won - der - ful _____ S'Mar - vel - ous _____

27 B^b-7

E^b7

A^bMaj7

E^b7



that you should care for me! _____ to A

Fine

on Cue

31 B^b-7 E^b7

3x A^{Maj}7

A^bMaj7

